



Customizable Length LED Aluminum Profile For Heat Dissipation Customizable And Length

Our Product Introduction

for more products please visit us on alu-heatsink.com

Basic Information

- Place of Origin: China, Guangdong
- Brand Name: No Brand
- Minimum Order Quantity: 1000
- Delivery Time: 10-15 Workdays
- Payment Terms: L/C, T/T, Western Union, MoneyGram

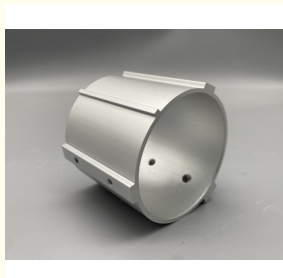


Product Specification

- Heat Dissipation: Efficient
- Color: Customized
- Application: Lighting Industry
- Surface Treatment: Anodized, Coating
- Shape: Customizable
- Durability: High
- Installation Type: Surface Mount
- Length: Customizable
- Highlight: Customizable LED Aluminum Profile,
Heat Dissipation LED Aluminum Profile,
Customizable Length LED Aluminum Profile



More Images



Product Description

Product Description:

Made from top-grade aluminum, this profile is a sturdy and long-lasting solution for your LED wall washer needs. The aluminum material ensures that the product is strong enough to withstand harsh weather conditions and other external factors that could cause damage to your LED wall washer.

The LED Aluminum Profile is also designed to offer efficient heat dissipation, which is vital for your LED wall washer's optimal performance. With this feature, you can rest assured that your LED wall washer will not overheat, which could lead to permanent damage or even fire hazards.

Customization is a key feature of this product, allowing you to tailor your LED Aluminum Profile to your exact specifications. Whether you need a longer profile or a thicker one, we can help you create the perfect product. The width is also customizable, so you can get the exact size you need to fit your LED wall washer.

This product is ideal for anyone looking for a reliable and durable solution for their LED wall washer needs. With its high-quality aluminum construction and efficient heat dissipation, you can rest assured that your LED wall washer will perform optimally and last for years to come.

Features:

Product Name: LED Aluminum Profile

Color: Customized

Surface Treatment: Anodized, Coating

Length: Customizable

Corrosion Resistance: Yes

Shape: Customizable

This LED Aluminum Profile is an excellent choice for education led light projects. Its customizable length and shape make it a versatile option for a variety of lighting needs, while its corrosion resistance ensures durability over time. With customizable color options and surface treatment choices of anodized or coating, this LED Aluminum Profile is a smart choice for education led light projects.

Technical Parameters:

Shape	Customizable
Heat Dissipation	Efficient
Thickness	Customizable
Application	Lighting Industry (e.g. strip light, education led light)
Installation Type	Surface Mount
Durability	High
Material	Aluminum
Width	Customizable
Surface Treatment	Anodized, Coating
Color	Customized

Applications:

The LED Aluminum Profile is manufactured in Guangdong, China, by an unbranded producer. It is made with surface mounting installation type, which makes it easy to install on any surface without much hassle. The anodized and coating surface treatment helps to prevent rusting and prolongs the life span of the product.

The LED Aluminum Profile is suitable for different application occasions and scenarios. It is ideal for lighting up living rooms, bedrooms, and kitchens. It is also perfect for use in commercial spaces such as offices, showrooms, and exhibition halls. The LED Aluminum Profile can be used to create different lighting effects that help to enhance the ambiance of any space.

The LED Aluminum Profile is perfect for use in strip light installation. The profile helps to protect the strip light and gives it a professional look. The profile also helps to dissipate heat, which helps to prolong the life span of the strip light.

The LED Aluminum Profile is also perfect for use in LED wall washer installation. The profile helps to protect the LED wall washer and gives it a professional look. The profile also helps to dissipate heat, which helps to prolong the life span of the LED wall washer.

The LED Aluminum Profile is highly durable and can withstand harsh environmental conditions. It is perfect for use in both indoor and outdoor environments. The aluminum material used in producing the LED Aluminum Profile is highly resistant to corrosion and is not affected by UV rays.

Packing :

Product Packaging:

The LED Aluminum Profile will be carefully packed in a sturdy cardboard box to prevent any damage during transportation.



Golden Chain Products Industrial Co., Ltd.



+86 13823492359



cherry@jkd888.com



alu-heatsink.com