



Customized LED Downlight Housing Customizable Thickness For Illumination Solutions

Our Product Introduction

for more products please visit us on alu-heatsink.com

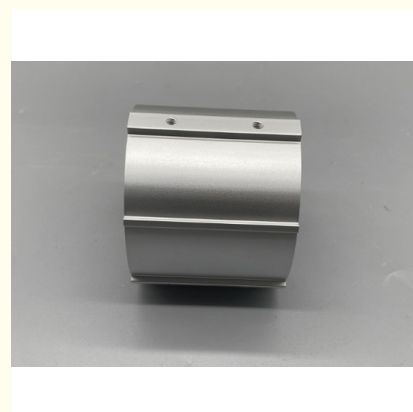
Basic Information

- Place of Origin: China,Guangdong
- Brand Name: No Brand
- Delivery Time: 10-15 Workdays
- Payment Terms: L/C, D/A, D/P, T/T, Western Union, MoneyGram



Product Specification

- Installation Type: Surface Mount
- Color: Customized
- Corrosion Resistance: Yes
- Thickness: Customizable
- Surface Treatment: Anodized, Coating
- Shape: Customizable
- Material: Aluminum
- Length: Customizable
- Highlight: Illumination Solutions LED Downlight Housing , Customizable Thickness LED Downlight Housing , Customized LED Downlight Housing



More Images



Product Description

Product Description:

The LED Aluminum Profile is made from high-quality aluminum, which ensures that it is both lightweight and durable. The surface treatment of the profile is anodized or coated, which adds an extra layer of protection against wear and tear, making it long-lasting and resistant to corrosion.

The shape of the profile is customizable, which means that it can be tailored to fit your specific needs. This makes it an extremely versatile product that can be used in a variety of settings.

The LED Aluminum Profile is designed for surface mount installation, which means that it can be easily attached to any flat surface. This makes it an ideal product for use in classrooms, libraries, and laboratories, where space is at a premium.

The LED Aluminum Profile is also compatible with strip lights, which means that it can be used to create a wide range of lighting effects. This makes it an ideal choice for those who are looking to create a bright and vibrant learning environment.

The length of the LED Aluminum Profile is customizable, which means that it can be tailored to fit your specific needs. This makes it an extremely versatile product that can be used in a variety of settings.

In conclusion, the LED Aluminum Profile is an excellent product that is perfect for your education LED light needs. Its high level of durability, customizable shape, and surface treatment make it an ideal choice for use in classrooms, libraries, and laboratories. So why wait? Order your LED Aluminum Profile today and start enjoying the benefits of this versatile and practical product!

Features:

Product Name: LED Aluminum Profile

Surface Treatment: Anodized, Coating

Width: Customizable

Color: Customized

Durability: High

Heat Dissipation: Efficient

Material: Aluminum

Compatible with: Strip Light

Technical Parameters:

Installation Type:	Surface Mount
Length:	Customizable
Shape:	Customizable
Color:	Customized
Thickness:	Customizable
Material:	Aluminum
Corrosion Resistance:	Yes
Surface Treatment:	Anodized, Coating
Application:	Lighting Industry
Heat Dissipation:	Efficient

Applications:

One common use for LED Aluminum Profiles is in the creation of led wall washers. These are lighting fixtures that are designed to illuminate large areas, such as the walls of a building or a large outdoor space. The LED Aluminum Profile is an ideal choice for this application due to its ability to provide a strong, consistent light source while also being highly durable and long-lasting.

Another popular use for LED Aluminum Profiles is in the education led light industry. These profiles can be used to create a variety of different lighting fixtures that are ideal for use in classrooms, libraries, and other educational settings. With customizable shapes and thicknesses, these profiles can be used to create lighting fixtures that are tailored to the specific needs of any given space.

Additionally, LED Aluminum Profiles are often used in a wide range of other lighting applications, including in commercial and residential settings. They are popular due to their high durability and ability to be customized to fit a wide range of different needs. With a range of different colors and finishes available, these profiles can be used to create lighting fixtures that are both functional and visually appealing. In conclusion, the LED Aluminum Profile is a highly versatile product that is ideal for a wide range of different occasions and scenarios within the lighting industry. With its high durability, customizable thickness and shape, and ability to be used in a variety of different applications, it is a popular choice for professionals in the lighting industry. Whether you are looking to create led wall washers, education led lights, or any other type of lighting fixture, the LED Aluminum Profile is a reliable and effective solution.

Packing :

Product Packaging:

The LED Aluminum Profile will be packaged in a sturdy cardboard box with protective foam and bubble wrap to ensure safe delivery.



Golden Chain Products Industrial Co., Ltd.



+86 13823492359



cherry@jkd888.com



alu-heatsink.com