



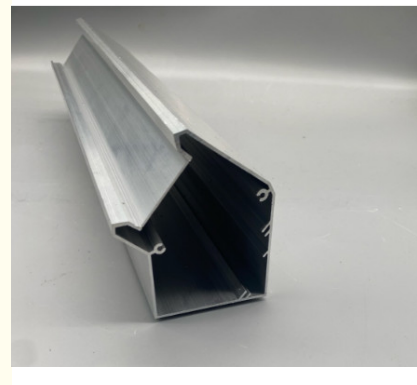
High Durability Heat Dissipation Aluminum Profile For Lighting Industry

Our Product Introduction

for more products please visit us on alu-heatsink.com

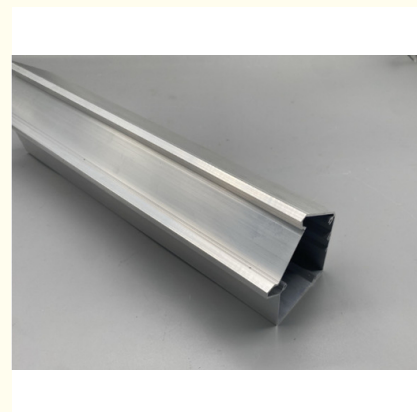
Basic Information

- Place of Origin: China, Guangdong
- Brand Name: No Brand
- Minimum Order Quantity: 1000
- Payment Terms: L/C, T/T, Western Union, MoneyGram

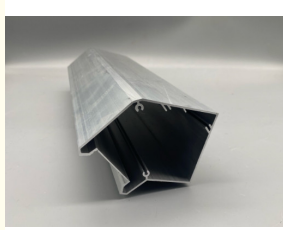
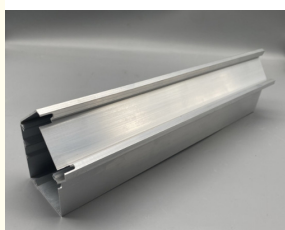


Product Specification

- Corrosion Resistance: Yes
- Shape: Customizable
- Durability: High
- Length: Customizable
- Width: Customizable
- Surface Treatment: Customized
- Application: Lighting Industry
- Heat Dissipation: Efficient
- Highlight: **Heat Dissipation Aluminum Profile,
Lighting Industry Aluminum Profile,
High Durability LED Aluminum Profile**



More Images



Product Description

Product Description:

The installation type for this profile is surface mount, making it easy to install on various surfaces such as walls, ceilings, or furniture. Whether you are looking to illuminate a room or accentuate architectural features, the LED Aluminum Profile is a versatile option for your lighting needs.

One of the key features of this profile is its corrosion resistance. The aluminum material is inherently resistant to corrosion, ensuring that this profile can withstand outdoor elements and humid environments without degradation. This makes it an ideal choice for both indoor and outdoor applications where moisture or harsh weather conditions may be a concern.

With a customizable width, the LED Aluminum Profile can accommodate different LED strip light sizes, allowing you to create a customized lighting solution to fit your specific needs. Whether you prefer a narrow beam of light or a wider spread, you can easily adjust the width of the profile to achieve the desired lighting effect.

Additionally, the shape of the LED Aluminum Profile is also customizable, giving you the flexibility to create unique lighting designs that suit your space. Whether you prefer a linear profile for a sleek and modern look, or a curved profile for a more dynamic lighting effect, the options are endless with this versatile product.

When paired with LED wall washer or strip lights, the LED Aluminum Profile can create stunning lighting displays that enhance the ambiance of any room or outdoor space. The aluminum material not only helps to dissipate heat efficiently, but also provides a sleek and contemporary aesthetic that complements modern interiors and architectural designs.

Overall, the LED Aluminum Profile is a durable, versatile, and customizable lighting solution that offers both functionality and style.

Whether you are looking to illuminate a residential living space, a commercial storefront, or an outdoor patio, this profile is designed to meet your lighting needs with ease.

Features:

Product Name: LED Aluminum Profile

Application: Lighting Industry

Shape: Customizable

Thickness: Customizable

Width: Customizable

Durability: High

Technical Parameters:

Corrosion Resistance	Yes
Length	Customizable
Material	Aluminum
Heat Dissipation	Efficient
Width	Customizable
Shape	Customizable
Surface Treatment	Customized
Installation Type	Surface Mount
Thickness	Customizable
Color	Customized

Applications:

One of the primary product application occasions for LED Aluminum Profiles is in strip light installations. The profiles provide a secure and sleek housing for strip lights, ensuring a professional and polished finish. Whether it's for accent lighting in residential spaces or ambient lighting in commercial settings, these profiles offer a seamless integration with strip lights.

Another ideal scenario for utilizing LED Aluminum Profiles is in LED wall washer applications. The durable aluminum construction of the profiles enhances the longevity and performance of LED wall washers. With customizable surface treatments, the profiles can be tailored to complement the design scheme of any indoor or outdoor space.

Thanks to their high durability, No Brand LED Aluminum Profiles are suitable for both indoor and outdoor use, making them a reliable choice for various lighting projects. Whether it's for residential lighting upgrades, commercial lighting installations, or architectural lighting designs, these profiles offer a dependable solution.

Whether you are looking to enhance the functionality of strip lights, create a striking LED wall washer setup, or improve the overall durability of your lighting installations, LED Aluminum Profiles by No Brand are the perfect choice. With customizable options and a high level of durability, these profiles meet the diverse needs of the lighting industry with ease.

Customization:

Enhance your LED wall washer or strip light with our custom Product Customization Services for the LED Aluminum Profile. Made with

high durability, our aluminum profiles are designed to provide long-lasting support for your lighting needs. Originating from China, Guangdong, our profiles are treated with a customized surface finish and available in a variety of colors to suit your preferences. The surface mount installation type ensures easy setup, while the corrosion resistance feature guarantees lasting quality. Trust our No Brand aluminum profiles to elevate your LED lighting experience.

Packing :

Product Packaging: The LED Aluminum Profile is carefully packaged in a sturdy cardboard box to ensure safe transportation. The profile is wrapped with protective materials to prevent any damage during shipping.



Golden Chain Products Industrial Co., Ltd.



+86 13823492359



cherry@jkd888.com



alu-heatsink.com