



High Durability Aluminum Shelving Sturdy and Customizable Storage Solutions

Our Product Introduction

for more products please visit us on alu-heatsink.com

Basic Information

- Place of Origin: China, Guangdong
- Brand Name: No Brand
- Minimum Order Quantity: 300Kilogram
- Packaging Details: protect film
- Delivery Time: 15-30days
- Payment Terms: L/C, T/T

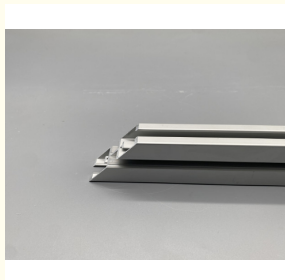


Product Specification

- Aesthetics: Sleek
- Malleability: High
- Durability: High
- Cost: Affordable
- Heat Resistance: High
- Color: Customized
- Conductivity: Good
- Stiffness: Strong
- Highlight: **Sturdy Aluminum Shelving,
High Durability Aluminum Shelving,
Customizable Storage Aluminum Shelving**



More Images



Product Description

Product Description:

The Aluminum Extrusion Shelf is a versatile and practical storage solution that offers a perfect blend of functionality and style. This sleek and modern shelving unit is ideal for a variety of settings, including offices, homes, and retail spaces. With its affordable cost, customized color options, strong rust resistance, high heat resistance, and sleek aesthetics, this aluminum wall shelf is a must-have for anyone looking to optimize their storage space while adding a touch of elegance to their environment.

When it comes to cost, the Aluminum Extrusion Shelf stands out as an affordable option compared to other shelving solutions on the market. Despite its competitive pricing, it does not compromise on quality or durability, making it a cost-effective choice for both residential and commercial use.

One of the standout features of this aluminum office shelving is its ability to be customized in terms of color. Whether you are looking to match your existing decor or create a bold statement piece, the Aluminum Extrusion Shelf can be tailored to suit your preferences. This customization option allows you to personalize your storage solution and integrate it seamlessly into your space.

In addition to its customizable color options, the Aluminum Extrusion Shelf boasts strong rust resistance. This feature ensures that your shelving unit will maintain its pristine appearance and structural integrity over time, even in high-moisture environments or outdoor settings. The durable aluminum construction of the shelf makes it a reliable choice for long-term use.

Furthermore, the Aluminum Extrusion Shelf offers high heat resistance, making it suitable for a range of applications. Whether you need a storage solution for a kitchen, garage, or outdoor space, this shelving unit can withstand elevated temperatures without warping or degrading. Its heat resistance adds to its versatility and makes it a practical choice for various environments.

Aside from its functional features, the Aluminum Extrusion Shelf is designed with sleek aesthetics in mind. The clean lines and modern design of the shelf enhance the overall look of any space, adding a touch of sophistication and style. Whether you prefer a minimalist aesthetic or a more contemporary vibe, this aluminum wall shelving will complement your decor effortlessly.

In conclusion, the Aluminum Extrusion Shelf is a top-notch storage solution that ticks all the boxes in terms of affordability, customization, durability, and style. Whether you are in need of aluminum wall shelving for your office, home, or retail space, this shelving unit offers the perfect balance of form and function. With its strong rust resistance, high heat resistance, and sleek aesthetics, the Aluminum Extrusion Shelf is a reliable and attractive choice for optimizing your storage needs.

Features:

Product Name: Aluminum Extrusion Shelf

Stiffness: Strong

Cost: Affordable

Rust Resistance: Strong

Heat Resistance: High

Tensile Strength: High

Technical Parameters:

Corrosion Resistance	Strong
Color	Customized
Aesthetics	Sleek
Tensile Strength	High
Application	Household, Business
Conductivity	Good
Malleability	High
Stiffness	Strong
Durability	High
Cost	Affordable

Applications:

Product Application Occasions and Scenarios for the Aluminum Extrusion Shelf

Brand Name: No Brand

Place of Origin: China, Guangdong

Minimum Order Quantity: 300 Kilogram

Packaging Details: Protect film

Delivery Time: 15-30 days

Payment Terms: L/C, T/T

Stiffness: Strong

Tensile Strength: High

Color: Customized

Durability: High

Material: Aluminum

Aluminum shelving is a versatile and durable storage solution that can be used in various settings. Whether for residential, commercial, or industrial purposes, wood aluminum shelving offers a sleek and modern look while providing strong stiffness and high tensile strength. For residential use, aluminum shelving can be installed in kitchens, garages, closets, and living spaces to organize and display items efficiently. The customizable color options allow homeowners to match the shelving with existing decor, enhancing the overall aesthetics of the space.

In commercial settings such as retail stores, offices, and restaurants, aluminum shelving provides a professional and contemporary appearance. The high durability of the material ensures that the shelves can withstand heavy use and maintain their quality over time. Industrial environments such as warehouses, factories, and workshops benefit from the strength and stability of aluminum shelving. The shelves can support heavy loads and withstand harsh conditions, making them ideal for storing tools, equipment, and supplies.

With its origins in Guangdong, China, aluminum extrusion shelves are manufactured to high standards, meeting the demands of various industries. The minimum order quantity of 300 kilograms ensures that businesses can stock up on these reliable shelves for their storage needs.

Overall, aluminum shelving is a practical and stylish solution for organizing and storing items in diverse environments, offering strength, durability, and customization options to suit different applications.

Customization:

Product Customization Services for Aluminum Extrusion Shelf:

- Brand Name: No Brand
- Place of Origin: China, Guangdong
- Minimum Order Quantity: 300 Kilogram
- Packaging Details: Protect film
- Delivery Time: 15-30 days
- Payment Terms: L/C, T/T
- Stiffness: Strong
- Color: Customized
- Application: Household, Business
- Cost: Affordable
- Durability: High

Packing and Shipping:

Product Packaging:

The Aluminum Extrusion Shelf is carefully packaged in a sturdy cardboard box to ensure safe delivery.

Shipping:

Ocean, Air, Express



Golden Chain Products Industrial Co., Ltd.



+86 13823492359



cherry@jkd888.com



alu-heatsink.com