



## High Tensile Strength and Durability Anodized Aluminum Extrusion Shelf for Versatile Household & Industrial Storage Solutions

Our Product Introduction

for more products please visit us on [alu-heatsink.com](http://alu-heatsink.com)

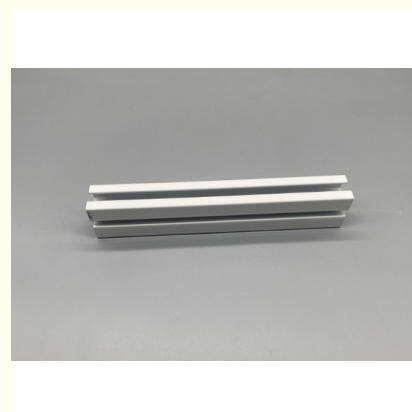
### Basic Information

- Place of Origin: China, Guangdong
- Brand Name: No Brand
- Minimum Order Quantity: 300Kilogram
- Packaging Details: protect film
- Delivery Time: 15-30days
- Payment Terms: L/C, T/T



### Product Specification

- Cost: Affordable
- Stiffness: Strong
- Conductivity: Good
- Malleability: High
- Material: Aluminum
- Application: Household Business
- Corrosion Resistance: Strong
- Color: Anodized, Power Coating
- Highlight: Versatile Aluminum Extrusion Shelf, High Tensile Strength Aluminum Extrusion Shelf, Industrial Storage Aluminum Extrusion Shelf



### More Images



## Product Description

### Product Description:

The Aluminum Extrusion Shelf is a versatile and practical storage solution that combines the durability of aluminum with the beauty of wood. This innovative product offers a perfect balance of strength, affordability, and aesthetics, making it an ideal choice for various residential and commercial settings.

One of the key features of the Aluminum Extrusion Shelf is its strong rust resistance, ensuring that it will maintain its structural integrity and appearance over time. This makes it a durable and long-lasting option for environments where moisture or humidity may be a concern.

Despite its impressive rust resistance, this aluminum shelving unit remains affordable, providing an excellent value for customers seeking high-quality storage solutions without breaking the bank. The cost-effectiveness of the product makes it a practical choice for budget-conscious individuals and businesses.

In addition to its rust-resistant properties, the Aluminum Extrusion Shelf boasts strong stiffness, offering reliable support for various items and ensuring that the shelf remains stable and secure. This stiffness is essential for maintaining the integrity of the shelf, even when loaded with heavy items.

Furthermore, the Aluminum Extrusion Shelf exhibits high heat resistance, allowing it to withstand elevated temperatures without warping or deforming. This feature makes it suitable for use in kitchens, garages, or other spaces where heat exposure may be a concern, providing peace of mind to users.

Complementing its impressive functionality, the Aluminum Extrusion Shelf features a sleek and modern design that enhances the overall aesthetics of any room. The combination of wood and aluminum creates a contemporary look that seamlessly blends with various decor styles, adding a touch of sophistication to the space.

Whether used in a residential kitchen, a retail store, or a professional office, the Aluminum Extrusion Shelf offers a versatile storage solution that meets the demands of modern living. Its wood aluminum construction provides the perfect marriage of durability, affordability, and style, making it a desirable option for those seeking a practical and visually appealing shelving unit.

### Features:

Product Name: Aluminum Extrusion Shelf

Stiffness: Strong

Durability: High

Rust Resistance: Strong

Tensile Strength: High

Application: Household, Business

Keywords: Aluminum Wall Shelving, Aluminum Office Shelving, Aluminum Shelving

### Technical Parameters:

Stiffness	Strong
Heat Resistance	High
Malleability	High
Color	Anodized, Power Coating
Durability	High
Rust Resistance	Strong
Aesthetics	Sleek
Material	Aluminum
Corrosion Resistance	Strong
Application	Household, Business

### Applications:

Product Application Occasions and Scenarios for the Aluminum Extrusion Shelf:

The Aluminum Extrusion Shelf by No Brand is a versatile product that can be used in a variety of settings due to its strong corrosion resistance, stiffness, and rust resistance. Originating from Guangdong, China, this shelf is a reliable choice for various applications.

1. Industrial Use: The Aluminum Extrusion Shelf is ideal for industrial environments where strong corrosion and rust resistance are essential. Its high stiffness makes it suitable for holding heavy equipment or materials.

2. Retail Displays: The sleek design and high malleability of the Wood Aluminum Extrusion Shelf make it perfect for retail displays. Whether showcasing products in a store or at a trade show, this shelf adds a modern touch.

3. Home Organization: Aluminum Shelving is a popular choice for home organization projects due to its durability and rust resistance. Use it in the kitchen, garage, or pantry to keep items neatly organized.

4. Office Spaces: The Wood Aluminum Extrusion Shelf is a practical addition to office spaces for storing files, supplies, and equipment. Its anodized or power coating finish adds a professional look to any workspace.

5. Outdoor Use: Thanks to its strong rust resistance, the Aluminum Extrusion Shelf is suitable for outdoor applications such as garden storage or patio organization. The shelf can withstand various weather conditions without deteriorating.

With a minimum order quantity of 300 kilograms and packaging details including protective film, the Aluminum Extrusion Shelf can be ordered in bulk for large projects. Delivery time ranges from 15 to 30 days, and payment terms accepted include L/C and T/T.

**Customization:**

Product Customization.Services for.Wood Aluminum.Extrusion.Shelf: .....  
Brand Name: No Brand  
Place of Origin: China, Guangdong  
Minimum Order Quantity: 300 Kilograms  
Packaging Details: Protect film  
Delivery Time: 15-30 days  
Payment Terms: L/C, T/T  
Cost: Affordable  
Conductivity: Good  
Application: Household, Business  
Rust Resistance: Strong  
Corrosion Resistance: Strong

**Packing and Shipping:**

Product Packaging:  
The Aluminum Extrusion Shelf is carefully packaged in a sturdy cardboard box to ensure safe delivery.  
Shipping:  
Ocean, Air, Express



Golden Chain Products Industrial Co., Ltd.



+86 13823492359



cherry@jkd888.com



alu-heatsink.com