



## High Malleability and Strong Corrosion Resistance in 6063 Aluminum

### Our Product Introduction

for more products please visit us on [alu-heatsink.com](http://alu-heatsink.com)

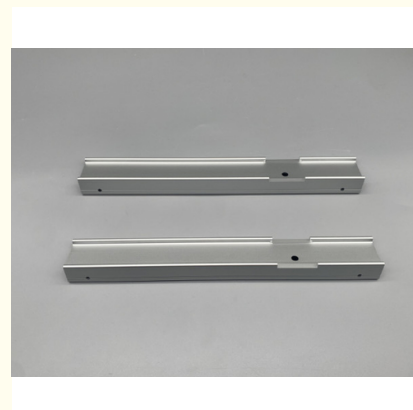
#### Basic Information

- Place of Origin: China, Guangdong
- Brand Name: No Brand
- Minimum Order Quantity: 300Kilogram
- Packaging Details: protect film
- Delivery Time: 15-30days
- Payment Terms: L/C, T/T

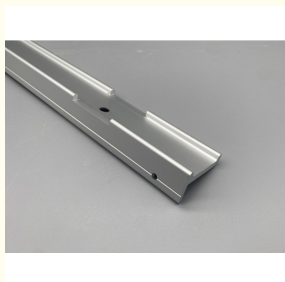


#### Product Specification

- Material: Aluminum
- Stiffness: Strong
- Aesthetics: Sleek
- Rust Resistance: Strong
- Durability: High
- Malleability: High
- Heat Resistance: High
- Cost: Affordable



#### More Images



## Product Description

### Product Description:

The Wood Aluminum Extrusion Shelf is a versatile and durable storage solution that offers exceptional functionality and aesthetic appeal. Crafted from high-quality aluminum, this shelf boasts impressive rust resistance, ensuring long-lasting performance even in humid or outdoor environments.

With a high tensile strength, the Aluminum Extrusion Shelf can safely support heavy items without bending or warping, making it ideal for storing a wide range of items such as books, plants, and decorative pieces. The shelf's robust construction guarantees stability and reliability, providing peace of mind for users.

Available in a range of finishes including anodized and powder coating, the Aluminum Wall Shelving can be customized to complement any interior decor style. Whether you prefer a sleek modern look or a more industrial aesthetic, this shelf can be tailored to suit your preferences, adding a touch of sophistication to any room.

In addition to its impressive structural qualities, the Wood Aluminum Extrusion Shelf also offers excellent heat resistance, making it suitable for use in kitchens, bathrooms, or any other areas where temperatures may fluctuate. This feature ensures that the shelf remains in top condition even in challenging environments, providing durability and longevity.

Thanks to its high malleability, the Aluminum Wall Shelving can be easily shaped and adjusted to accommodate different storage needs. Whether you need to create extra space for taller items or customize the layout to fit a specific area, this shelf can be effortlessly modified to meet your requirements, offering versatility and convenience.

Overall, the Wood Aluminum Extrusion Shelf combines strength, durability, and style to provide a practical and attractive storage solution for any home or workspace. With its exceptional rust resistance, high tensile strength, versatile color options, superior heat resistance, and high malleability, this shelf is a reliable and versatile choice for organizing and displaying your belongings.

### Features:

Product Name: Aluminum Extrusion Shelf

Cost: Affordable

Malleability: High

Rust Resistance: Strong

Color: Anodized, Powder Coating

Tensile Strength: High

### Technical Parameters:

Tensile Strength	High
Application	Household, Business
Color	Anodized, Powder Coating
Stiffness	Strong
Cost	Affordable
Aesthetics	Sleek
Durability	High
Rust Resistance	Strong
Corrosion Resistance	Strong
Heat Resistance	High

### Applications:

Product Application Occasions and Scenarios for the Aluminum Extrusion Shelf:

The Aluminum Extrusion Shelf offered by No Brand, originating from China, Guangdong, is a versatile and durable product suitable for various applications. With a minimum order quantity of 300 kilograms, the shelves are ideal for both commercial and residential use.

These shelves are perfect for organizing spaces such as kitchens, bathrooms, garages, and offices. The rust resistance feature of the aluminum material ensures longevity even in humid environments, making it suitable for both indoor and outdoor use.

The Aluminum Shelving can be used to create stylish and modern storage solutions, fitting seamlessly into contemporary home or office decor. The option of anodized or powder coating color finishes allows for customization to match different interior styles.

For industrial settings, the Aluminum Wall Shelving provides a cost-effective storage solution that is both sturdy and corrosion-resistant. The high heat resistance of the material makes it suitable for storing items in areas exposed to high temperatures.

Wood Aluminum shelves are also a popular choice for those seeking a blend of natural and modern aesthetics. The good conductivity of aluminum makes these shelves suitable for use in retail displays or electronic equipment storage.

With a protective film packaging and a delivery time of 15-30 days, customers can expect their orders to arrive safely and promptly. The flexible payment terms of L/C and T/T make the purchasing process convenient.

In summary, the Aluminum Extrusion Shelf is a versatile, durable, and affordable storage solution suitable for a wide range of applications and environments.

Customization:

Product Customization Services for Aluminum Extrusion Shelf: -----  
Brand Name: No Brand  
Place of Origin: China, Guangdong  
Minimum Order Quantity: 300 Kilogram  
Packaging Details: Protect film  
Delivery Time: 15-30 days  
Payment Terms: L/C, T/T  
Malleability: High  
Aesthetics: Sleek  
Rust Resistance: Strong  
Conductivity: Good  
Color: Anodized, Power Coating  
Keywords: Aluminum Wall Shelving, Aluminum Office Shelving, Aluminum Office Shelving

Packing and Shipping:

Product Packaging: -----  
The Aluminum Extrusion Shelf is carefully packaged in a sturdy cardboard box to ensure safe delivery.  
Shipping:  
Ocean, Air, Express



Golden Chain Products Industrial Co., Ltd.



+86 13823492359



cherry@jkd888.com



alu-heatsink.com